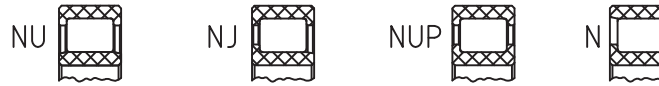


Customer-specific cylindrical roller bearing from **SMG**®

for
 Contact person:
 Customer:
 Phone:
 E-mail:
 Quantity: / / / /

execution :



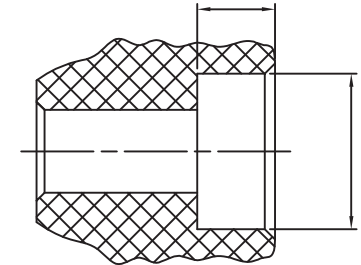
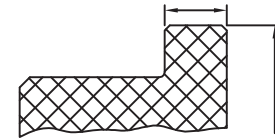
Possible options

Outer ring

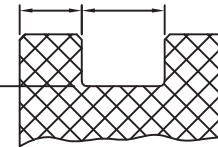
Inner ring

ball bearing with flange

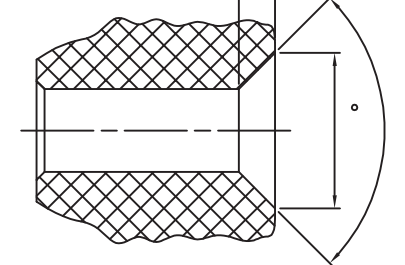
ball bearing with counterbore



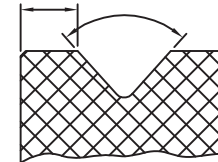
ball bearing with puncture



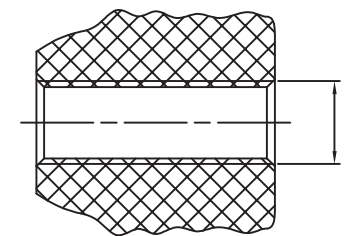
ball bearing with cone reduction



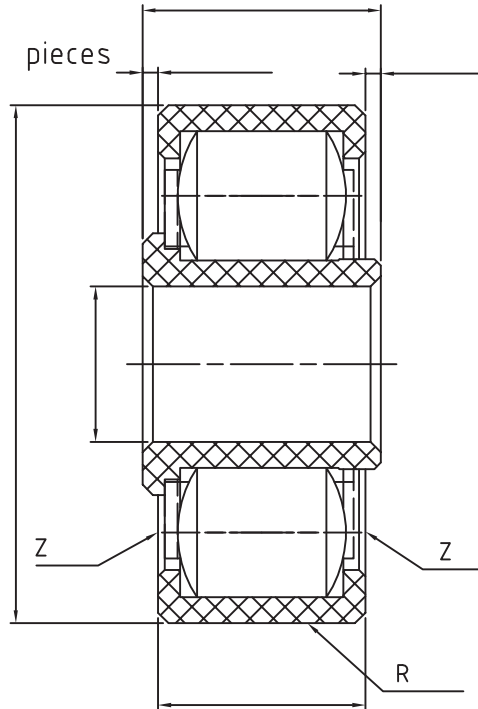
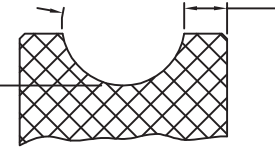
ball bearing with V-puncture



ball bearing with thread



ball bearing with radii puncture



Conditions at the depository
 Speed: r.p.m
 Capacity radial stat: N
 Capacity radial dyn: N
 Operation temperature: °C
 Conductibility or insulation resp.: yes Atex no
 Weatherability: yes no
 Food conformity: yes no
 Radiation exposure/resistance: kGy
 Chemical additives :

Material selection

Rings:
 Cage:
 Rollers: